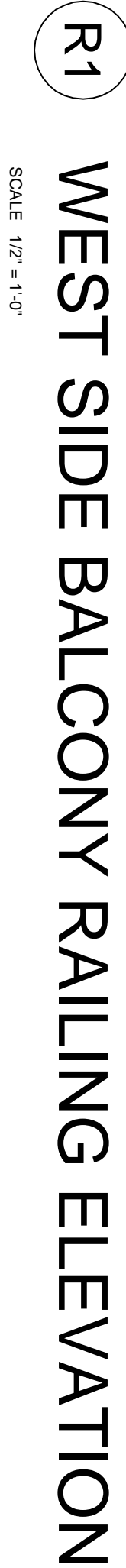


1000000

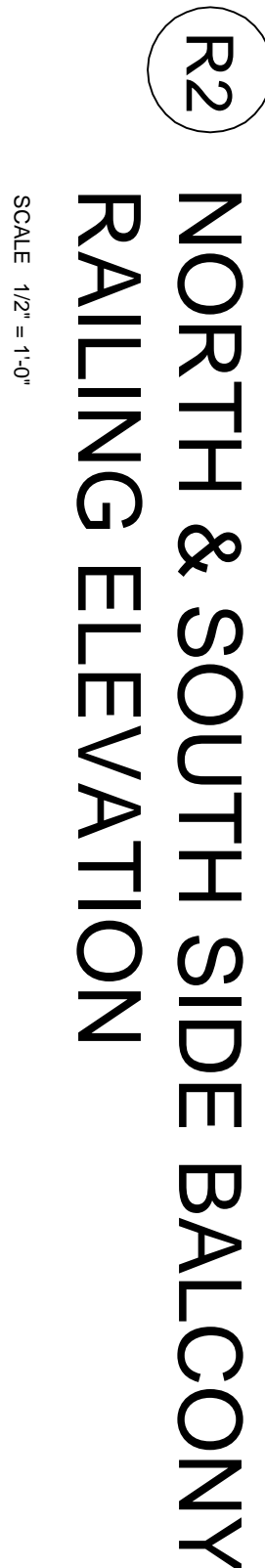
1000000

1000000

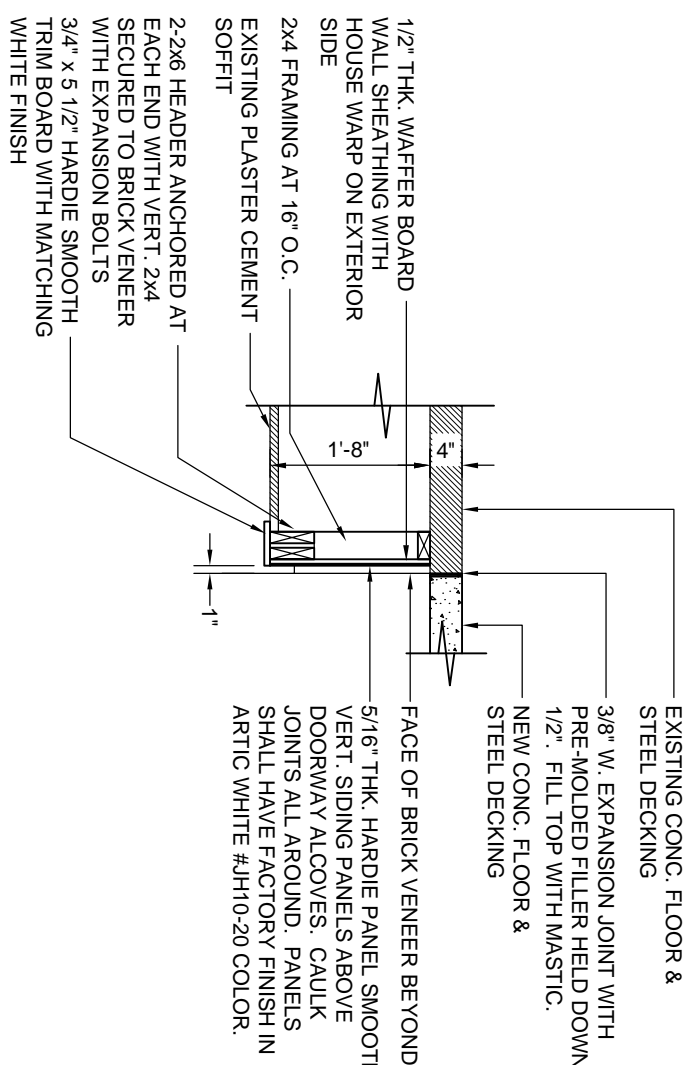
OF 3 SHEETS



1. THE OPENING SPACE BETWEEN PARALLEL RAILING COMPONENTS, BETWEEN THE END OF RAILINGS & STEEL COLUMN, & BETWEEN THE BOTTOM RAIL & FLOOR SHALL NOT BE GREATER THAN 4" WIDE.
2. CONTINUOUS WELDED RAILINGS, POSTS, AND BALLUSTERS, JOINTS, GRIND ALL WELDS SMOOTH.
3. CLOSE ALL OPEN PIPE ENDS WITH STEEL PLATES WELDED TO PIPE ENDS GRIND ALL WELDS AND CORNER EDGES SMOOTH.
4. ALL RAILING VERTICAL POSTS SHALL BE WELDED TO STEEL WELD PLATE/STIFF CONCRETE SLAB SURFACE. SEE STRUCTURAL DRAWINGS FOR CONTRIBUTION OF WELD PLATES.
5. PAINT ALL STEEL RAILINGS WITH PRIMER COAT OF 3 MILS EPOXY PRIMER & TOP COAT OF 3 MILS ALIPHATIC URETHANE. FINISH COAT SHALL HAVE BLACK COLOR.
6. CONCRETE SHALL BE 3500 PSI MINIMUM.
7. CONCRETE SLABS SHALL BE REINFORCED WITH 6# W/2' x W/2' 9" W/2'.



SCALE 1/2" = 1'-0"



SCALE 1/2" = 1'-0"